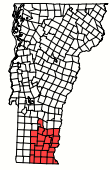
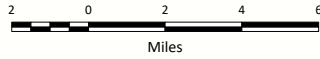


2024 Windham Regional Plan



WINDHAM REGIONAL COMMISSION
 139 Main St • Suite 505 • Brattleboro, VT 05301
 (802) 257-4547 • www.windhamregional.org



Ecological Resources

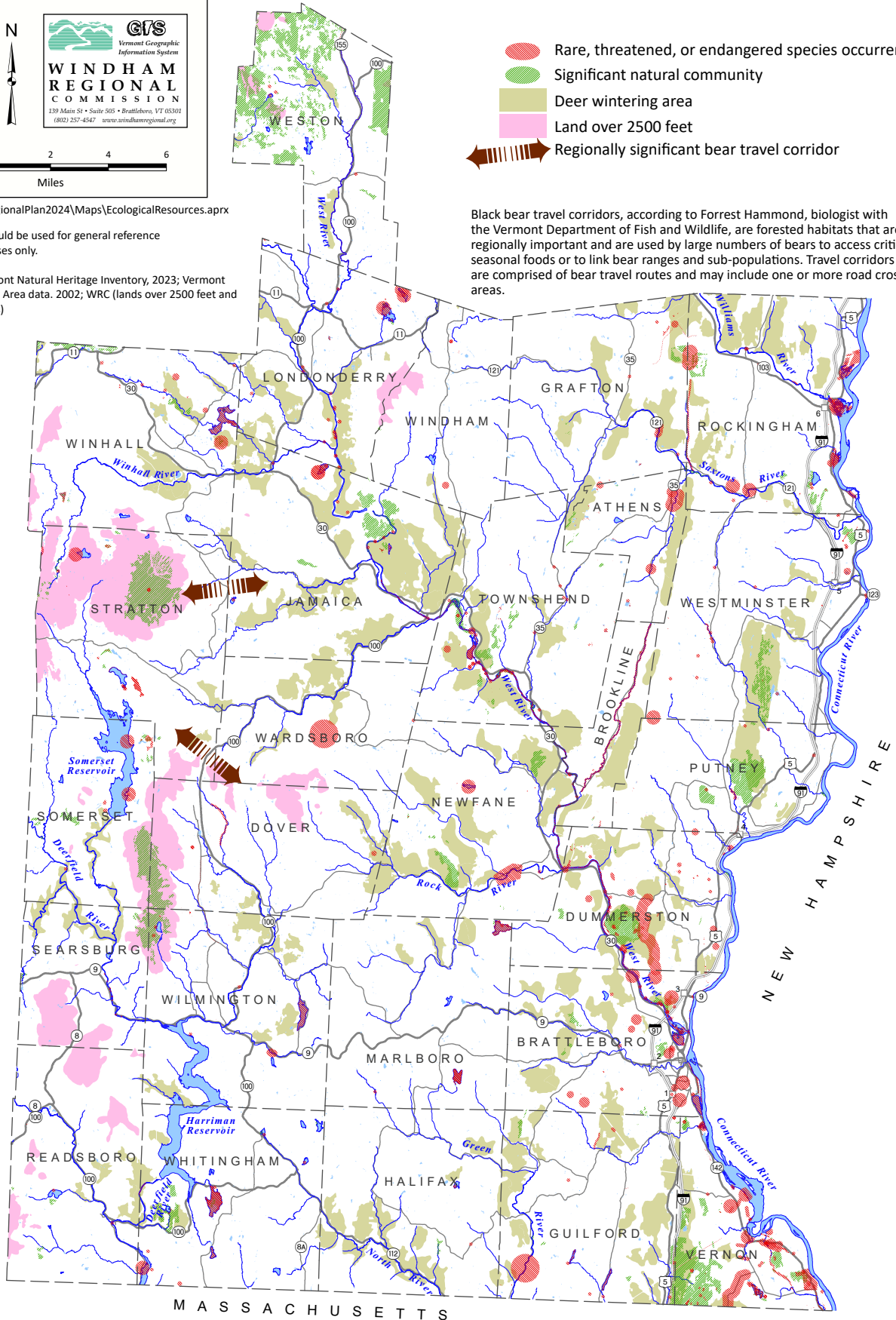
- Rare, threatened, or endangered species occurrence
- Significant natural community
- Deer wintering area
- Land over 2500 feet
- Regionally significant bear travel corridor

May 2024; u:\GIS\RegionalPlan2024\Maps\EcologicalResources.aprx

Note: This map should be used for general reference and planning purposes only.

Data sources: Vermont Natural Heritage Inventory, 2023; Vermont ANR Deer Wintering Area data, 2002; WRC (lands over 2500 feet and bear travel corridors)

Black bear travel corridors, according to Forrest Hammond, biologist with the Vermont Department of Fish and Wildlife, are forested habitats that are regionally important and are used by large numbers of bears to access critical seasonal foods or to link bear ranges and sub-populations. Travel corridors are comprised of bear travel routes and may include one or more road crossing areas.



M A S S A C H U S E T T S